



Charting for Root Cause Analysis

Randall W. Rice
www.riceconsulting.com

© 2009, Rice Consulting Services, Inc.



Charting Events and Causal Factors

- Objective: Chart the relationship of events, conditions, changes, barriers and causal factors on a timeline.
- ECFC is the acronym for Event and Causal Factor Chart

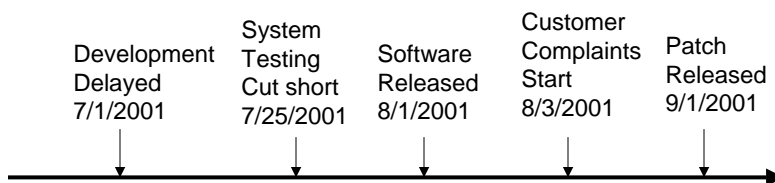


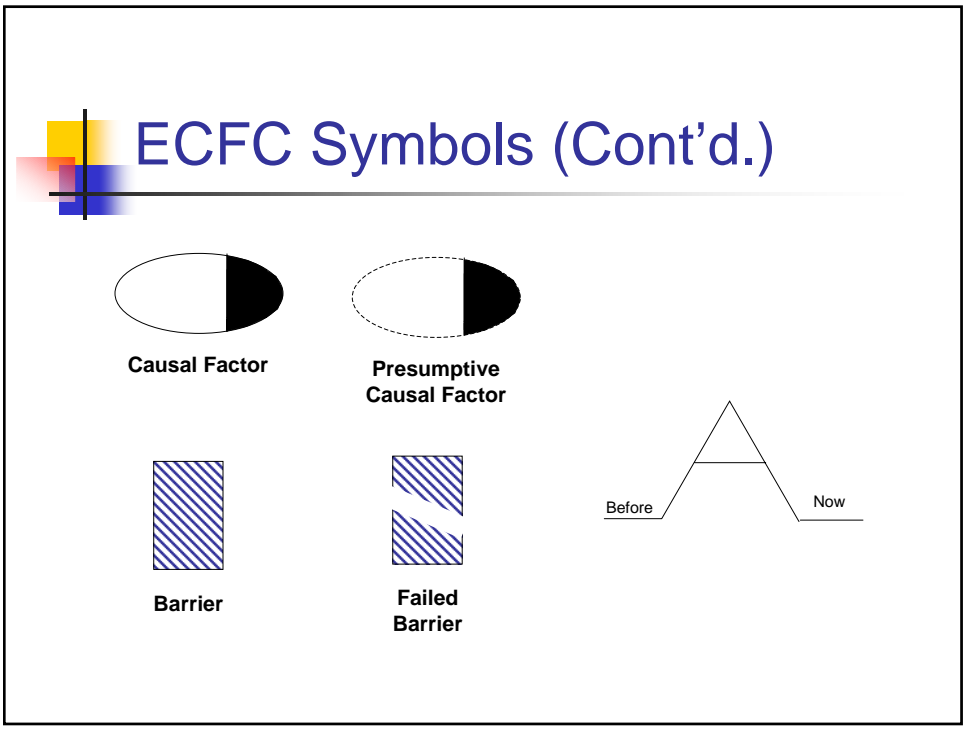
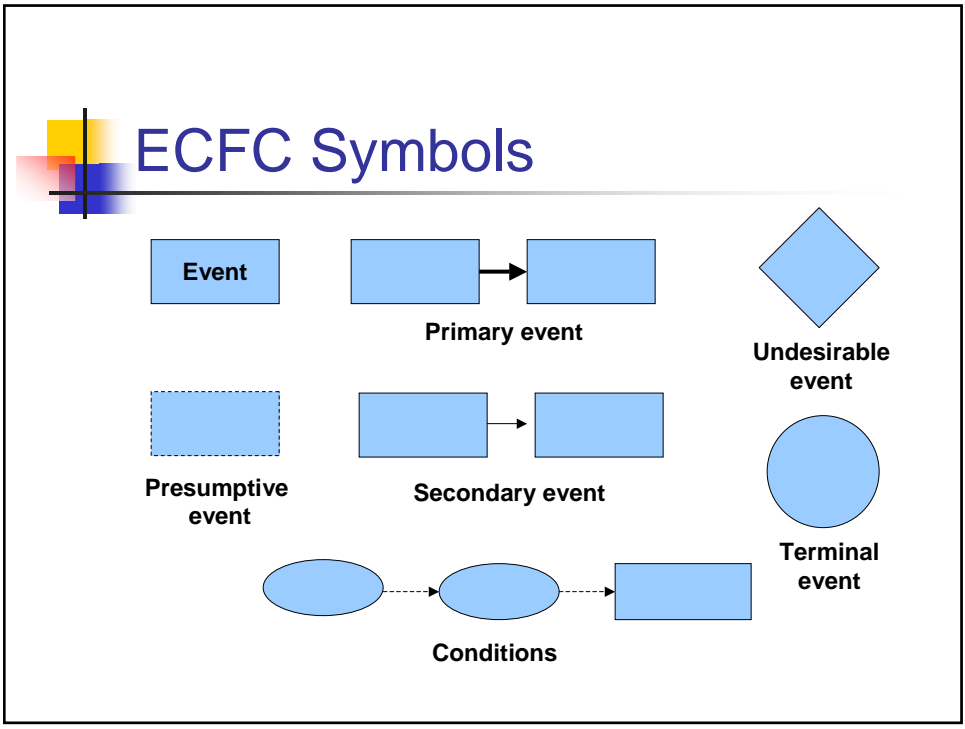
Understanding the ECFC

- The heart of the chart is the timeline.
 - The starting and ending points should be adequate to capture all important information to the situation.
- The ECFC is especially helpful in understanding complex situations.
- The graphical nature of the ECFC helps visualize the relationships in the situation.
- The ECFC uses many basic flowcharting symbols, but there are some adaptations.



Event Sequence/Timeline







Criteria for Event Description

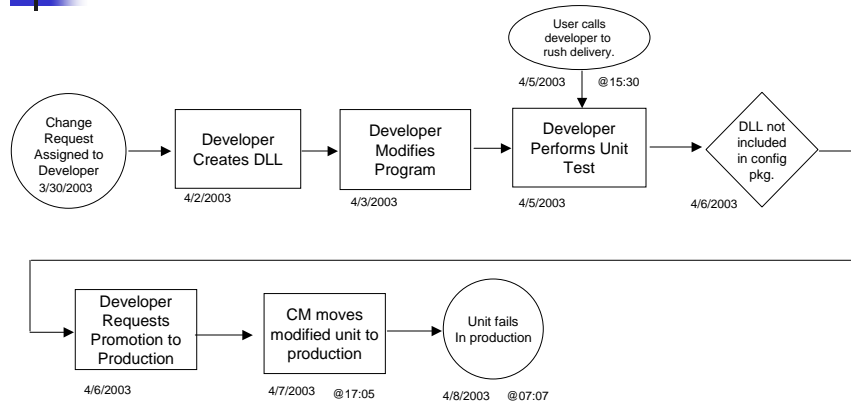
- Events describe an action, not a condition.
- Events are singular.
- Descriptions are short – one noun and one active verb.
- Events should be described exactly.
- Events should be quantified if possible.
- Events are based on known facts.
- The timeline scope ranges from beginning to end of the situation sequence.
- Ordering of events should have a logical flow.



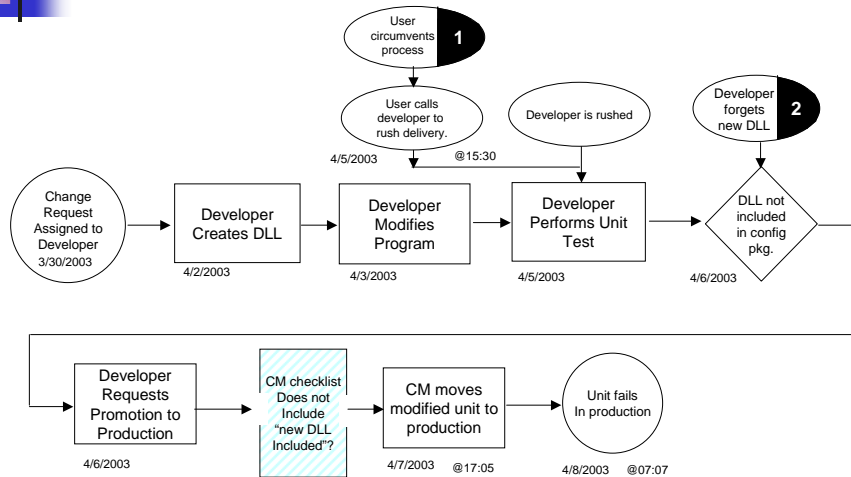
Principles for Cause-Effect Analysis

- All negative events are caused to happen.
 - They are the result of some type failure.
- Undesirable events are caused by additional causes.
 - These are called contributing causes.
- The root cause(s) can be determined by analyzing the cause-effect relationships around a primary effect.

ECFC Example – Version 1



ECFC Example – Version 2



Summary

- The Event and Causal Factor Chart is an effective way to show the sequence of events and the contributing factors to a negative event.
- Don't get too concerned about the correctness of the symbols. Focus on the understanding of the events.
- There is no standard for this. You might want to customize it for your own purposes.

Bio - Randall W. Rice

- Over 30 years experience in building and testing information systems in a variety of industries and technical environments
- Certified Software Quality Analyst
- Certified Software Tester
- ASTQB Certified Tester – Foundation level, Advanced Level – Test Manager, Test Analyst
- Treasurer of the American Software Testing Qualification Board (ASTQB)
- Chairperson, 1995 - 2000 QAI's annual software testing conference
- Co-author with William E. Perry, *Surviving the Top Ten Challenges of Software Testing*
- Principal Consultant and Trainer, Rice Consulting Services, Inc.





Contact Information

Randall W. Rice, CTAL-TM,TA
Rice Consulting Services, Inc.
P.O. Box 892003
Oklahoma City, OK 73189
Ph: 405-691-8075
Fax: 405-691-1441
Web site: www.riceconsulting.com
e-mail: rrice@riceconsulting.com

